



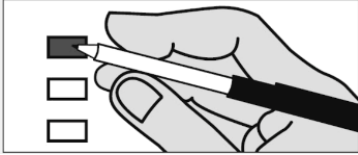
2025 General Election

November 4, 2025

Hamilton County

Precinct Arietta

Jade Sherman, Commissioner  
Gail Teal, Commissioner



Instructions

Mark the square to the left of the name of your choice. To vote for a candidate whose name is not printed on the ballot, mark the square to the left of the "write-in" and print the name clearly, staying within the box. Remember to flip ballot over for Propositions on back. Propositions mark the corresponding square for your choice. Any mark or writing outside of the spaces provided for voting may void the entire ballot. The number of choices is listed for each contest. Do not mark the ballot for more candidates than you are allowed. If you do, your vote in that contest will not count. If you make a mistake, or want to change your vote, ask a poll worker for a new ballot.



Sample Ballot

Office	Hamilton County Sheriff	Arietta Town Supervisor	Arietta Town Clerk	Arietta Highway Superintendent	Arietta Councilmember		Arietta Councilmember	Supreme Court Justice		Arietta Town Justice	
	(Vote for One)	(Vote for One)	(Vote for One)	(Vote for One)	(Vote for up to Two)		To fill Vacancy (Vote for One)	Judicial District 4 (Vote for up to Two)		(Vote for One)	
Democratic											
A											
Republican	<div><div></div><div>Karl G. Abrams</div><div>Republican</div></div>	<div><div></div><div>Christian D. Rhodes</div><div>Republican</div></div>	<div><div></div><div>Marie C. Buanno</div><div>Republican</div></div>	<div><div></div><div>Craig M. Small</div><div>Republican</div></div>	<div><div></div><div>Jacquelyn L. Grier</div><div>Republican</div></div>	<div><div></div><div>Christy L. Wilt</div><div>Republican</div></div>		<div><div></div><div>Chris Obstarczyk</div><div>Republican</div></div>	<div><div></div><div>Kris Singh</div><div>Republican</div></div>	<div><div></div><div>Christopher J. Laver</div><div>Republican</div></div>	
B											
Conservative								<div><div></div><div>Chris Obstarczyk</div><div>Conservative</div></div>	<div><div></div><div>Kris Singh</div><div>Conservative</div></div>		
C											
Working Families											
D											
Independent Body E		<div><div></div><div>Christian D. Rhodes</div><div>Independent Body E</div></div>	<div><div></div><div>Laura H. Morehouse</div><div>Independent Body E</div></div>		<div><div></div><div>Jacquelyn L. Grier</div><div>Independent Body E</div></div>	<div><div></div><div>Christy L. Wilt</div><div>Independent Body E</div></div>	<div><div></div><div>Jennifer L. Smith</div><div>Independent Body E</div></div>			<div><div></div><div>Christopher J. Laver</div><div>Independent Body E</div></div>	
E											
Independent Body F			<div><div></div><div>Marie C. Buanno</div><div>Independent Body F</div></div>								
F											
Independent Body G											
G											
Write-in	<div><div></div><div></div><div>Write-in</div></div>	<div><div></div><div></div><div>Write-in</div></div>	<div><div></div><div></div><div>Write-in</div></div>	<div><div></div><div></div><div>Write-in</div></div>	<div><div></div><div></div><div>Write-in</div></div>	<div><div></div><div></div><div>Write-in</div></div>	<div><div></div><div></div><div>Write-in</div></div>	<div><div></div><div></div><div>Write-in</div></div>	<div><div></div><div></div><div>Write-in</div></div>	<div><div></div><div></div><div>Write-in</div></div>	
H											





**Proposal Number One, an Amendment**

(Vote for One)

Amendment to Allow Olympics Sports Complex in Essex County on State Forest Preserve Land.

Allows Skiing and related trail facilities on state forest preserve land. The site is 1,039 acres. Requires State to add 2,500 acres of new forest land in Adirondack Park.

A "Yes" vote authorizes new ski trails and related facilities in the Adirondack forest preserve.

A "No" vote does not authorize this use.

☐

Yes

☐

No





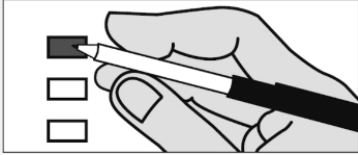
2025 General Election

November 4, 2025

Hamilton County

Precinct Benson

Jade Sherman, Commissioner  
Gail Teal, Commissioner



Instructions

Mark the square to the left of the name of your choice. To vote for a candidate whose name is not printed on the ballot, mark the square to the left of the "write-in" and print the name clearly, staying within the box. Remember to flip ballot over for Propositions on back. Propositions mark the corresponding square for your choice. Any mark or writing outside of the spaces provided for voting may void the entire ballot. The number of choices is listed for each contest. Do not mark the ballot for more candidates than you are allowed. If you do, your vote in that contest will not count. If you make a mistake, or want to change your vote, ask a poll worker for a new ballot.



Sample Ballot

Office	Hamilton County Sheriff	Benson Town Supervisor	Benson Town Clerk	Benson Councilmember		Supreme Court Justice					
	(Vote for One)	(Vote for One)	(Vote for One)	(Vote for up to Two)		Judicial District 4 (Vote for up to Two)					
Democratic			<div></div> Democratic Carol J. Lott								
A											
Republican	<div></div> Republican Karl G. Abrams	<div></div> Republican Phillip C. Synder		<div></div> Republican Scott E. Shepard		<div></div> Republican Chris Obstarczyk	<div></div> Republican Kris Singh				
B											
Conservative						<div></div> Conservative Chris Obstarczyk	<div></div> Conservative Kris Singh				
C											
Working Families											
D											
Independent Body E		<div></div> Independent Body E Phillip C. Synder		<div></div> Independent Body E Lori M. Mead							
E											
Independent Body F											
F											
Independent Body G											
G											
Write-in	<div></div> Write-in	<div></div> Write-in	<div></div> Write-in	<div></div> Write-in	<div></div> Write-in	<div></div> Write-in	<div></div> Write-in				
H											





**Proposal Number One, an Amendment**

(Vote for One)

Amendment to Allow Olympics Sports Complex in Essex County on State Forest Preserve Land.

Allows Skiing and related trail facilities on state forest preserve land. The site is 1,039 acres. Requires State to add 2,500 acres of new forest land in Adirondack Park.

A "Yes" vote authorizes new ski trails and related facilities in the Adirondack forest preserve.

A "No" vote does not authorize this use.

☐

Yes

☐

No





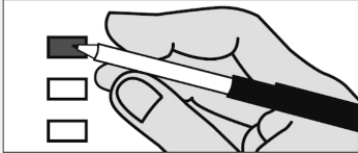
2025 General Election

November 4, 2025

Hamilton County

Precinct Hope

Jade Sherman, Commissioner  
Gail Teal, Commissioner



Instructions

Mark the square to the left of the name of your choice. To vote for a candidate whose name is not printed on the ballot, mark the square to the left of the "write-in" and print the name clearly, staying within the box. Remember to flip ballot over for Propositions on back. Propositions mark the corresponding square for your choice. Any mark or writing outside of the spaces provided for voting may void the entire ballot. The number of choices is listed for each contest. Do not mark the ballot for more candidates than you are allowed. If you do, your vote in that contest will not count. If you make a mistake, or want to change your vote, ask a poll worker for a new ballot.



Sample Ballot

Office	Hamilton County Sheriff	Hope Town Supervisor	Hope Town Clerk	Hope Highway Superintendent	Hope Councilmember		Supreme Court Justice		Hope Town Justice		
	(Vote for One)	(Vote for One)	(Vote for One)	(Vote for One)	(Vote for up to Two)		Judicial District 4 (Vote for up to Two)		(Vote for One)		
Democratic											
A											
Republican	<div><div></div><div>Karl G. Abrams</div><div>Republican</div></div>	<div><div></div><div>Steven M. Tomlinson</div><div>Republican</div></div>	<div><div></div><div>Dianna L. Downing</div><div>Republican</div></div>	<div><div></div><div>Zachery L. Colson</div><div>Republican</div></div>	<div><div></div><div>William J. Witts</div><div>Republican</div></div>	<div><div></div><div>John E. Stuart Jr.</div><div>Republican</div></div>	<div><div></div><div>Chris Obstarczyk</div><div>Republican</div></div>	<div><div></div><div>Kris Singh</div><div>Republican</div></div>	<div><div></div><div>Thomas J. Hall</div><div>Republican</div></div>		
B											
Conservative							<div><div></div><div>Chris Obstarczyk</div><div>Conservative</div></div>	<div><div></div><div>Kris Singh</div><div>Conservative</div></div>			
C											
Working Families											
D											
Independent Body E											
E											
Independent Body F											
F											
Independent Body G											
G											
Write-in	<div><div></div><div></div><div>Write-in</div></div>	<div><div></div><div></div><div>Write-in</div></div>	<div><div></div><div></div><div>Write-in</div></div>	<div><div></div><div></div><div>Write-in</div></div>	<div><div></div><div></div><div>Write-in</div></div>	<div><div></div><div></div><div>Write-in</div></div>	<div><div></div><div></div><div>Write-in</div></div>	<div><div></div><div></div><div>Write-in</div></div>	<div><div></div><div></div><div>Write-in</div></div>		
H											





**Proposal Number One, an Amendment**

(Vote for One)

Amendment to Allow Olympics Sports Complex in Essex County on State Forest Preserve Land.

Allows Skiing and related trail facilities on state forest preserve land. The site is 1,039 acres. Requires State to add 2,500 acres of new forest land in Adirondack Park.

A "Yes" vote authorizes new ski trails and related facilities in the Adirondack forest preserve.

A "No" vote does not authorize this use.

☐

Yes

☐

No





2025 General Election

November 4, 2025

Hamilton County

Precinct Indian Lake #1

Jade Sherman, Commissioner  
Gail Teal, Commissioner



Instructions

Mark the square to the left of the name of your choice. To vote for a candidate whose name is not printed on the ballot, mark the square to the left of the "write-in" and print the name clearly, staying within the box. Remember to flip ballot over for Propositions on back. Propositions mark the corresponding square for your choice. Any mark or writing outside of the spaces provided for voting may void the entire ballot. The number of choices is listed for each contest. Do not mark the ballot for more candidates than you are allowed. If you do, your vote in that contest will not count. If you make a mistake, or want to change your vote, ask a poll worker for a new ballot.



Sample Ballot

Office	Hamilton County Sheriff (Vote for One)	Indian Lake Highway Superintendent (Vote for One)	Indian Lake Town Clerk (Vote for One)	Indian Lake Town Councilmember (Vote for up to Two)		Supreme Court Justice Judicial District 4 (Vote for up to Two)		Indian Lake Town Justice (Vote for One)			
Democratic											
A											
Republican	<div><div></div><div>Karl G. Abrams</div><div>Republican</div></div>	<div><div></div><div>Eugene G. Darling Jr.</div><div>Republican</div></div>	<div><div></div><div>Taylor Miner</div><div>Republican</div></div>			<div><div></div><div>Chris Obstarczyk</div><div>Republican</div></div>	<div><div></div><div>Kris Singh</div><div>Republican</div></div>	<div><div></div><div>Helen Cookie Glass</div><div>Camp Party</div></div>			
Conservative						<div><div></div><div>Chris Obstarczyk</div><div>Conservative</div></div>	<div><div></div><div>Kris Singh</div><div>Conservative</div></div>				
C											
Working Families											
D											
Independent Body E								<div><div></div><div>Helen Cookie Glass</div><div>Camp Party</div></div>			
E											
Independent Body F								<div><div></div><div>Corey J. Hutchins</div><div>Sound Judgement Party</div></div>			
F											
Independent Body G											
G											
Write-in	<div><div></div><div></div><div>Write-in</div></div>	<div><div></div><div></div><div>Write-in</div></div>	<div><div></div><div></div><div>Write-in</div></div>	<div><div></div><div></div><div>Write-in</div></div>	<div><div></div><div></div><div>Write-in</div></div>	<div><div></div><div></div><div>Write-in</div></div>	<div><div></div><div></div><div>Write-in</div></div>	<div><div></div><div></div><div>Write-in</div></div>			
H											





**Proposal Number One, an Amendment**

(Vote for One)

Amendment to Allow Olympics Sports Complex in Essex County on State Forest Preserve Land.

Allows Skiing and related trail facilities on state forest preserve land. The site is 1,039 acres. Requires State to add 2,500 acres of new forest land in Adirondack Park.

A "Yes" vote authorizes new ski trails and related facilities in the Adirondack forest preserve.

A "No" vote does not authorize this use.

☐

Yes

☐

No







2025 General Election

November 4, 2025

Hamilton County

Precinct Blue Mountian

Jade Sherman, Commissioner  
Gail Teal, Commissioner



Instructions

Mark the square to the left of the name of your choice. To vote for a candidate whose name is not printed on the ballot, mark the square to the left of the "write-in" and print the name clearly, staying within the box. Remember to flip ballot over for Propositions on back. Propositions mark the corresponding square for your choice. Any mark or writing outside of the spaces provided for voting may void the entire ballot. The number of choices is listed for each contest. Do not mark the ballot for more candidates than you are allowed. If you do, your vote in that contest will not count. If you make a mistake, or want to change your vote, ask a poll worker for a new ballot.



Sample Ballot

Office	Hamilton County Sheriff (Vote for One)	Indian Lake Highway Superintendent (Vote for One)	Indian Lake Town Clerk (Vote for One)	Indian Lake Town Councilmember (Vote for up to Two)		Supreme Court Justice Judicial District 4 (Vote for up to Two)		Indian Lake Town Justice (Vote for One)			
Democratic											
A											
Republican	<div><div></div><div>Karl G. Abrams</div><div>Republican</div></div>	<div><div></div><div>Eugene G. Darling Jr.</div><div>Republican</div></div>	<div><div></div><div>Taylor Miner</div><div>Republican</div></div>			<div><div></div><div>Chris Obstarczyk</div><div>Republican</div></div>	<div><div></div><div>Kris Singh</div><div>Republican</div></div>	<div><div></div><div>Helen Cookie Glass</div><div>Camp Party</div></div>			
Conservative						<div><div></div><div>Chris Obstarczyk</div><div>Conservative</div></div>	<div><div></div><div>Kris Singh</div><div>Conservative</div></div>				
C											
Working Families											
D											
Independent Body E								<div><div></div><div>Helen Cookie Glass</div><div>Camp Party</div></div>			
E											
Independent Body F								<div><div></div><div>Corey J. Hutchins</div><div>Sound Judgement Party</div></div>			
F											
Independent Body G											
G											
Write-in	<div><div></div><div></div><div>Write-in</div></div>	<div><div></div><div></div><div>Write-in</div></div>	<div><div></div><div></div><div>Write-in</div></div>	<div><div></div><div></div><div>Write-in</div></div>	<div><div></div><div></div><div>Write-in</div></div>	<div><div></div><div></div><div>Write-in</div></div>	<div><div></div><div></div><div>Write-in</div></div>	<div><div></div><div></div><div>Write-in</div></div>			
H											





**Proposal Number One, an Amendment**

(Vote for One)

Amendment to Allow Olympics Sports Complex in Essex County on State Forest Preserve Land.

Allows Skiing and related trail facilities on state forest preserve land. The site is 1,039 acres. Requires State to add 2,500 acres of new forest land in Adirondack Park.

A "Yes" vote authorizes new ski trails and related facilities in the Adirondack forest preserve.

A "No" vote does not authorize this use.

☐

Yes

☐

No





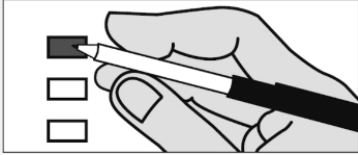
2025 General Election

November 4, 2025

Hamilton County

Precinct Inlet

Jade Sherman, Commissioner  
Gail Teal, Commissioner



Instructions

Mark the square to the left of the name of your choice. To vote for a candidate whose name is not printed on the ballot, mark the square to the left of the "write-in" and print the name clearly, staying within the box. Remember to flip ballot over for Propositions on back. Propositions mark the corresponding square for your choice. Any mark or writing outside of the spaces provided for voting may void the entire ballot. The number of choices is listed for each contest. Do not mark the ballot for more candidates than you are allowed. If you do, your vote in that contest will not count. If you make a mistake, or want to change your vote, ask a poll worker for a new ballot.



Sample Ballot

Office	Hamilton County Sheriff	Inlet Town Supervisor	Inlet Town Clerk	Inlet Town Councilmember A	Inlet Town Councilmember B	Supreme Court Justice		Inlet Town Justice			
	(Vote for One)	(Vote for One)	(Vote for One)	(Vote for One)	(Vote for One)	Judicial District 4 (Vote for up to Two)		(Vote for One)			
Democratic											
A											
Republican	<div><div></div><div>Karl G. Abrams</div><div>Republican</div></div>	<div><div></div><div>John B. Frey</div><div>Republican</div></div>	<div><div></div><div>Yvonne L. Lutz</div><div>Republican</div></div>	<div><div></div><div>Andrew D. Kalil</div><div>Republican</div></div>	<div><div></div><div>Timothy P. Brownsell</div><div>Republican</div></div>	<div><div></div><div>Chris Obstarczyk</div><div>Republican</div></div>	<div><div></div><div>Kris Singh</div><div>Republican</div></div>	<div><div></div><div>Tera K. Arey</div><div>Republican</div></div>			
B											
Conservative						<div><div></div><div>Chris Obstarczyk</div><div>Conservative</div></div>	<div><div></div><div>Kris Singh</div><div>Conservative</div></div>				
C											
Working Families											
D											
Independent Body E											
E											
Independent Body F											
F											
Independent Body G											
G											
Write-in	<div><div></div><div></div><div>Write-in</div></div>	<div><div></div><div></div><div>Write-in</div></div>	<div><div></div><div></div><div>Write-in</div></div>	<div><div></div><div></div><div>Write-in</div></div>	<div><div></div><div></div><div>Write-in</div></div>	<div><div></div><div></div><div>Write-in</div></div>	<div><div></div><div></div><div>Write-in</div></div>	<div><div></div><div></div><div>Write-in</div></div>			
H											





**Proposal Number One, an Amendment**

(Vote for One)

Amendment to Allow Olympics Sports Complex in Essex County on State Forest Preserve Land.

Allows Skiing and related trail facilities on state forest preserve land. The site is 1,039 acres. Requires State to add 2,500 acres of new forest land in Adirondack Park.

A "Yes" vote authorizes new ski trails and related facilities in the Adirondack forest preserve.

A "No" vote does not authorize this use.

☐

Yes

☐

No





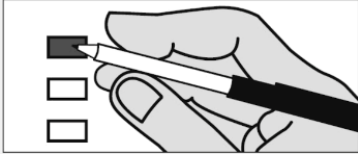
2025 General Election

November 4, 2025

Hamilton County

Precinct Lake Pleasant

Jade Sherman, Commissioner  
Gail Teal, Commissioner



Instructions

Mark the square to the left of the name of your choice. To vote for a candidate whose name is not printed on the ballot, mark the square to the left of the "write-in" and print the name clearly, staying within the box. Remember to flip ballot over for Propositions on back. Propositions mark the corresponding square for your choice. Any mark or writing outside of the spaces provided for voting may void the entire ballot. The number of choices is listed for each contest. Do not mark the ballot for more candidates than you are allowed. If you do, your vote in that contest will not count. If you make a mistake, or want to change your vote, ask a poll worker for a new ballot.



Sample Ballot

Office	Hamilton County Sheriff	Lake Pleasant Town Supervisor	Lake Pleasant Town Clerk	Lake Pleasant Highway Superintendent	Lake Pleasant Councilmember		Supreme Court Justice				
	(Vote for One)	(Vote for One)	(Vote for One)	(Vote for One)	(Vote for up to Two)		Judicial District 4 (Vote for up to Two)				
Democratic											
A											
Republican	<div><div></div><div>Karl G. Abrams</div><div>Republican</div></div>	<div><div></div><div>Betsy A. Bain</div><div>Republican</div></div>	<div><div></div><div>Stephanie P. Smith</div><div>Republican</div></div>	<div><div></div><div>Randolph J. LaVarnway</div><div>Republican</div></div>	<div><div></div><div>Meg Parascandola</div><div>Republican</div></div>	<div><div></div><div>Katherine B. O'Connell</div><div>Republican</div></div>	<div><div></div><div>Chris Obstarczyk</div><div>Republican</div></div>	<div><div></div><div>Kris Singh</div><div>Republican</div></div>			
B											
Conservative											
C											
Working Families											
D											
Independent Body E		<div><div></div><div>Betsy A. Bain</div><div>Independent Body E</div></div>		<div><div></div><div>Randolph J. LaVarnway</div><div>Independent Body E</div></div>							
E											
Independent Body F											
F											
Independent Body G											
G											
Write-in	<div><div></div><div></div><div>Write-in</div></div>	<div><div></div><div></div><div>Write-in</div></div>	<div><div></div><div></div><div>Write-in</div></div>	<div><div></div><div></div><div>Write-in</div></div>	<div><div></div><div></div><div>Write-in</div></div>	<div><div></div><div></div><div>Write-in</div></div>	<div><div></div><div></div><div>Write-in</div></div>	<div><div></div><div></div><div>Write-in</div></div>			
H											





**Proposal Number One, an Amendment**

(Vote for One)

Amendment to Allow Olympics Sports Complex in Essex County on State Forest Preserve Land.

Allows Skiing and related trail facilities on state forest preserve land. The site is 1,039 acres. Requires State to add 2,500 acres of new forest land in Adirondack Park.

A "Yes" vote authorizes new ski trails and related facilities in the Adirondack forest preserve.

A "No" vote does not authorize this use.

☐

Yes

☐

No





2025 General Election

November 4, 2025

Hamilton County

Precinct Long Lake# 1

Jade Sherman, Commissioner  
Gail Teal, Commissioner



Instructions

Mark the square to the left of the name of your choice. To vote for a candidate whose name is not printed on the ballot, mark the square to the left of the "write-in" and print the name clearly, staying within the box. Remember to flip ballot over for Propositions on back. Propositions mark the corresponding square for your choice. Any mark or writing outside of the spaces provided for voting may void the entire ballot. The number of choices is listed for each contest. Do not mark the ballot for more candidates than you are allowed. If you do, your vote in that contest will not count. If you make a mistake, or want to change your vote, ask a poll worker for a new ballot.



Sample Ballot

Office	Hamilton County Sheriff (Vote for One)	County Coroner  District #4 (Vote for One)	Long Lake Town Supervisor (Vote for One)	Long Lake Town Clerk (Vote for One)	Long Lake Highway Superintendent (Vote for One)	Long Lake Town Councilmember A (Vote for One)	Long Lake Town Councilmember B (Vote for One)	Supreme Court Justice  Judicial District 4 (Vote for up to Two)		Long Lake Town Justice (Vote for One)	
Democratic											
A											
Republican	<div><div></div><div>Karl G. Abrams</div><div>Republican</div></div>		<div><div></div><div>Clay J. Arsenault</div><div>Momentum Party</div></div>	<div><div></div><div>Amber L. Wamback</div><div>Angler Party</div></div>	<div><div></div><div>Michael M. Lamphear</div><div>Republican</div></div>	<div><div></div><div>Mark A. Bird</div><div>Republican</div></div>		<div><div></div><div>Chris Obstarczyk</div><div>Republican</div></div>	<div><div></div><div>Kris Singh</div><div>Republican</div></div>		
B											
Conservative								<div><div></div><div>Chris Obstarczyk</div><div>Conservative</div></div>	<div><div></div><div>Kris Singh</div><div>Conservative</div></div>		
C											
Working Families											
D											
Independent Body E		<div><div></div><div>Carl E. Turner</div><div>Wide River Party</div></div>	<div><div></div><div>Clay J. Arsenault</div><div>Momentum Party</div></div>	<div><div></div><div>Amber L. Wamback</div><div>Angler Party</div></div>			<div><div></div><div>Thomas L. Donnelly</div><div>Pine Tree Party</div></div>				
E											
Independent Body F											
F											
Independent Body G											
G											
Write-in	<div><div></div><div></div><div>Write-in</div></div>	<div><div></div><div></div><div>Write-in</div></div>	<div><div></div><div></div><div>Write-in</div></div>	<div><div></div><div></div><div>Write-in</div></div>	<div><div></div><div></div><div>Write-in</div></div>	<div><div></div><div></div><div>Write-in</div></div>	<div><div></div><div></div><div>Write-in</div></div>	<div><div></div><div></div><div>Write-in</div></div>	<div><div></div><div></div><div>Write-in</div></div>	<div><div></div><div></div><div>Write-in</div></div>	
H											





**Proposal Number One, an Amendment**

(Vote for One)

Amendment to Allow Olympics Sports Complex in Essex County on State Forest Preserve Land.

Allows Skiing and related trail facilities on state forest preserve land. The site is 1,039 acres. Requires State to add 2,500 acres of new forest land in Adirondack Park.

A "Yes" vote authorizes new ski trails and related facilities in the Adirondack forest preserve.

A "No" vote does not authorize this use.

☐

Yes

☐

No







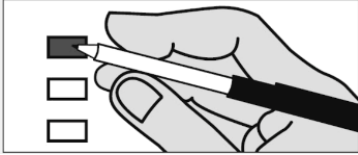
2025 General Election

November 4, 2025

Hamilton County

Precinct Raquette Lake

Jade Sherman, Commissioner  
Gail Teal, Commissioner



Instructions

Mark the square to the left of the name of your choice. To vote for a candidate whose name is not printed on the ballot, mark the square to the left of the "write-in" and print the name clearly, staying within the box. Remember to flip ballot over for Propositions on back. Propositions mark the corresponding square for your choice. Any mark or writing outside of the spaces provided for voting may void the entire ballot. The number of choices is listed for each contest. Do not mark the ballot for more candidates than you are allowed. If you do, your vote in that contest will not count. If you make a mistake, or want to change your vote, ask a poll worker for a new ballot.



Sample Ballot

Office	Hamilton County Sheriff (Vote for One)	County Coroner District #4 (Vote for One)	Long Lake Town Supervisor (Vote for One)	Long Lake Town Clerk (Vote for One)	Long Lake Highway Superintendent (Vote for One)	Long Lake Town Councilmember A (Vote for One)	Long Lake Town Councilmember B (Vote for One)	Supreme Court Justice Judicial District 4 (Vote for up to Two)		Long Lake Town Justice (Vote for One)	
Democratic											
A											
Republican	<div><div></div><div>Karl G. Abrams</div><div>Republican</div></div>		<div><div></div><div>Clay J. Arsenault</div><div>Momentum Party</div></div>	<div><div></div><div>Amber L. Wamback</div><div>Angler Party</div></div>	<div><div></div><div>Michael M. Lamphear</div><div>Republican</div></div>	<div><div></div><div>Mark A. Bird</div><div>Republican</div></div>		<div><div></div><div>Chris Obstarczyk</div><div>Republican</div></div>	<div><div></div><div>Kris Singh</div><div>Republican</div></div>		
B											
Conservative								<div><div></div><div>Chris Obstarczyk</div><div>Conservative</div></div>	<div><div></div><div>Kris Singh</div><div>Conservative</div></div>		
C											
Working Families											
D											
Independent Body E		<div><div></div><div>Carl E. Turner</div><div>Wide River Party</div></div>	<div><div></div><div>Clay J. Arsenault</div><div>Momentum Party</div></div>	<div><div></div><div>Amber L. Wamback</div><div>Angler Party</div></div>			<div><div></div><div>Thomas L. Donnelly</div><div>Pine Tree Party</div></div>				
E											
Independent Body F											
F											
Independent Body G											
G											
Write-in	<div><div></div><div></div><div>Write-in</div></div>	<div><div></div><div></div><div>Write-in</div></div>	<div><div></div><div></div><div>Write-in</div></div>	<div><div></div><div></div><div>Write-in</div></div>	<div><div></div><div></div><div>Write-in</div></div>	<div><div></div><div></div><div>Write-in</div></div>	<div><div></div><div></div><div>Write-in</div></div>	<div><div></div><div></div><div>Write-in</div></div>	<div><div></div><div></div><div>Write-in</div></div>	<div><div></div><div></div><div>Write-in</div></div>	
H											





**Proposal Number One, an Amendment**

(Vote for One)

Amendment to Allow Olympics Sports Complex in Essex County on State Forest Preserve Land.

Allows Skiing and related trail facilities on state forest preserve land. The site is 1,039 acres. Requires State to add 2,500 acres of new forest land in Adirondack Park.

A "Yes" vote authorizes new ski trails and related facilities in the Adirondack forest preserve.

A "No" vote does not authorize this use.

☐

Yes

☐

No





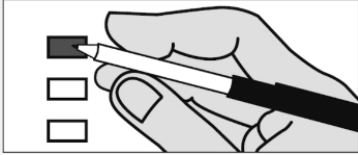
2025 General Election

November 4, 2025

Hamilton County

Precinct Morehouse

Jade Sherman, Commissioner  
Gail Teal, Commissioner



Instructions

Mark the square to the left of the name of your choice. To vote for a candidate whose name is not printed on the ballot, mark the square to the left of the "write-in" and print the name clearly, staying within the box. Remember to flip ballot over for Propositions on back. Propositions mark the corresponding square for your choice. Any mark or writing outside of the spaces provided for voting may void the entire ballot. The number of choices is listed for each contest. Do not mark the ballot for more candidates than you are allowed. If you do, your vote in that contest will not count. If you make a mistake, or want to change your vote, ask a poll worker for a new ballot.



Sample Ballot

Office	Hamilton County Sheriff	Morehouse Town Supervisor	Morehouse Town Clerk	Morehouse Highway Superintendent	Morehouse Councilmember		Morehouse Sole Elected Assesor	Supreme Court Justice		Morehouse Town Justice	
	(Vote for One)	(Vote for One)	(Vote for One)	(Vote for One)	(Vote for up to Two)		(Vote for One)	Judicial District 4 (Vote for up to Two)		(Vote for One)	
Democratic											
A											
Republican	<div><div></div><div>Karl G. Abrams</div><div>Republican</div></div>	<div><div></div><div>Anthony Butch Fernandez</div><div>Republican</div></div>	<div><div></div><div>Stephanie L. Tichenor</div><div>Republican</div></div>	<div><div></div><div>Robert G. Ford</div><div>Republican</div></div>	<div><div></div><div>Sonya M. DeVuyst</div><div>Republican</div></div>	<div><div></div><div>Mary Ann Mosher</div><div>Republican</div></div>		<div><div></div><div>Chris Obstarczyk</div><div>Republican</div></div>	<div><div></div><div>Kris Singh</div><div>Republican</div></div>	<div><div></div><div>Joseph T. Rathbun</div><div>Republican</div></div>	
B											
Conservative								<div><div></div><div>Chris Obstarczyk</div><div>Conservative</div></div>	<div><div></div><div>Kris Singh</div><div>Conservative</div></div>		
C											
Working Families											
D											
Independent Body E											
E											
Independent Body F											
F											
Independent Body G											
G											
Write-in	<div><div></div><div></div><div>Write-in</div></div>	<div><div></div><div></div><div>Write-in</div></div>	<div><div></div><div></div><div>Write-in</div></div>	<div><div></div><div></div><div>Write-in</div></div>	<div><div></div><div></div><div>Write-in</div></div>	<div><div></div><div></div><div>Write-in</div></div>	<div><div></div><div></div><div>Write-in</div></div>	<div><div></div><div></div><div>Write-in</div></div>	<div><div></div><div></div><div>Write-in</div></div>	<div><div></div><div></div><div>Write-in</div></div>	
H											





**Proposal Number One, an Amendment**

(Vote for One)

Amendment to Allow Olympics Sports Complex in Essex County on State Forest Preserve Land.

Allows Skiing and related trail facilities on state forest preserve land. The site is 1,039 acres. Requires State to add 2,500 acres of new forest land in Adirondack Park.

A "Yes" vote authorizes new ski trails and related facilities in the Adirondack forest preserve.

A "No" vote does not authorize this use.

☐

Yes

☐

No





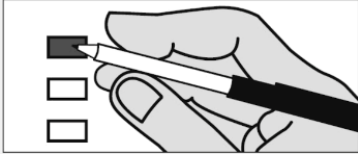
2025 General Election

November 4, 2025

Hamilton County

Precinct Wells

Jade Sherman, Commissioner  
Gail Teal, Commissioner



Instructions

Mark the square to the left of the name of your choice. To vote for a candidate whose name is not printed on the ballot, mark the square to the left of the "write-in" and print the name clearly, staying within the box. Remember to flip ballot over for Propositions on back. Propositions mark the corresponding square for your choice. Any mark or writing outside of the spaces provided for voting may void the entire ballot. The number of choices is listed for each contest. Do not mark the ballot for more candidates than you are allowed. If you do, your vote in that contest will not count. If you make a mistake, or want to change your vote, ask a poll worker for a new ballot.



Sample Ballot

Office	Hamilton County Sheriff	Wells Town Supervisor	Wells Town Councilmember		Supreme Court Justice		Wells Town Justice				
	(Vote for One)	(Vote for One)	(Vote for up to Two)		Judicial District 4 (Vote for up to Two)		(Vote for One)				
Democratic											
A											
Republican	<div><div></div><div>Karl G. Abrams</div><div>Republican</div></div>	<div><div></div><div>Beth A. Hunt</div><div>Republican</div></div>			<div><div></div><div>Chris Obstarczyk</div><div>Republican</div></div>	<div><div></div><div>Kris Singh</div><div>Republican</div></div>	<div><div></div><div>Gerard A. Murphy</div><div>Republican</div></div>				
Conservative					<div><div></div><div>Chris Obstarczyk</div><div>Conservative</div></div>	<div><div></div><div>Kris Singh</div><div>Conservative</div></div>					
C											
Working Families											
D											
Independent Body E			<div><div></div><div>Jason A. Luckert</div><div>Independent Body E</div></div>								
E											
Independent Body F			<div><div></div><div>Amber L. Margies</div><div>Independent Body F</div></div>								
F											
Independent Body G			<div><div></div><div>Scott E. Calta</div><div>Independent Body G</div></div>								
G											
Write-in	<div><div></div><div>Write-in</div></div>	<div><div></div><div>Write-in</div></div>	<div><div></div><div>Write-in</div></div>	<div><div></div><div>Write-in</div></div>	<div><div></div><div>Write-in</div></div>	<div><div></div><div>Write-in</div></div>	<div><div></div><div>Write-in</div></div>				
H											





**Proposal Number One, an Amendment**

(Vote for One)

Amendment to Allow Olympics Sports Complex in Essex County on State Forest Preserve Land.

Allows Skiing and related trail facilities on state forest preserve land. The site is 1,039 acres. Requires State to add 2,500 acres of new forest land in Adirondack Park.

A "Yes" vote authorizes new ski trails and related facilities in the Adirondack forest preserve.

A "No" vote does not authorize this use.

☐

Yes

☐

No

